

Flat Glass

TB402

Manual Opening Flat Glass Rooflight on builders upstand

Contents **!** Take care when unpacking **!** Check all correct parts are included and undamaged **!** Only use fixings supplied

Kerb	Fixing Quantities
Length of Nominal Unit Side (mm)	Number of fixings per side
750 and under	2
751 to 1200	3
1201 to 1650	4
1651 to 1950	5
1951 to 2250	6
2251 to 3000	7

! All Health & Safety Regulations must be followed on site throughout the installation process

! **WARNING!** Flat glass units are heavy. Some units may require a mechanical lift.

Glass Unit	Fixing Quantities
Length of Nominal Unit Side (mm)	Number of fixings per side
899 and under	2
900 to 1500	3
1501 to 2000	5
2001 to 2500	7
2501 to 3000	9
3001 to 3600	11

! **Finished weathered upstand dimensions**
Insulated upstand must be within tolerance stated otherwise worm drive will clash with upstand

1 Install roof covering to cover **side and top** of insulated upstand in accordance with manufacturer's installation recommendations

! NB there should be no excessive build up of layers, the top surface should be level and free from protrusions or projections which may prevent adequate weatherproofing

2 Open hinged frame

! Ensure kerb is supported when open to avoid damage

3 Mastic/Silicone around top inside edge of upstand

4 Facing hinges upslope, place kerb squarely onto upstand

5 Fix to upstand using 125mm kerb fasteners

! See fixing quantities table
! Do not overtighten fasteners

6 Attach worm drive to lower bracket on kerb

7 Attach worm drive to upper bracket

! Only unwind the top section

! **TECHNICAL SUPPORT:** For any technical information/queries please contact your supplier. The manufacturer operates a policy of continuous product improvement, and reserves the right to alter specifications at any time without notice. Every effort has been taken to ensure all details contained in this document are correct at the time of going to press but this document should be used only as a guide and does not in any way form part of a contract or warranty. It is the customer's responsibility to ensure that the product is suitable for the actual conditions of use, which are beyond the control of the manufacturer.

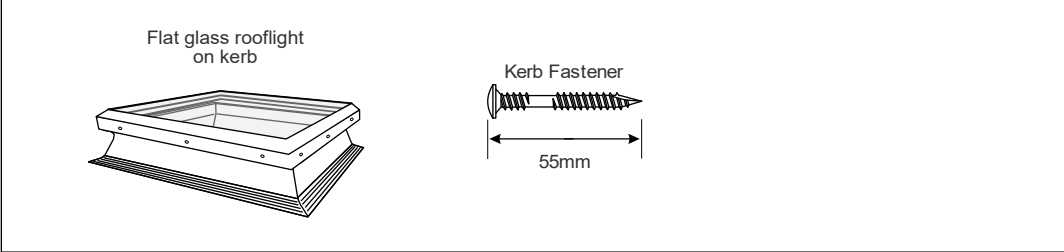
SCAN FOR INSTALLATION VIDEO

Flat Glass

TB402

Manual Opening Flat Glass Rooflight on PVC kerb

Contents **!** Take care when unpacking **!** Check all correct parts are included and undamaged **!** Only use fixings supplied



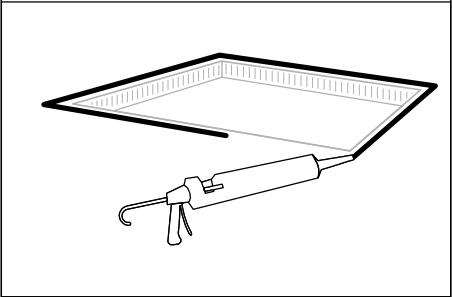
Kerb	Fixing Quantities
Length of Nominal Unit Side (mm)	Number of fixings per side
750 and under	2
751 to 1200	3
1201 to 1650	4
1651 to 1950	5
1951 to 2250	6
2251 to 3000	7

! All Health & Safety Regulations must be followed on site throughout the installation process

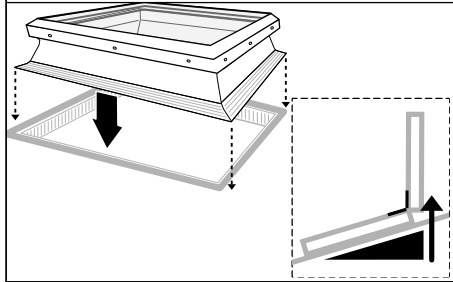
! **WARNING!** Flat glass units are heavy. Some units may require a mechanical lift.

Glass Unit	Fixing Quantities
Length of Nominal Unit Side (mm)	Number of fixings per side
899 and under	2
900 to 1500	3
1501 to 2000	5
2001 to 2500	7
2501 to 3000	9
3001 to 3600	11

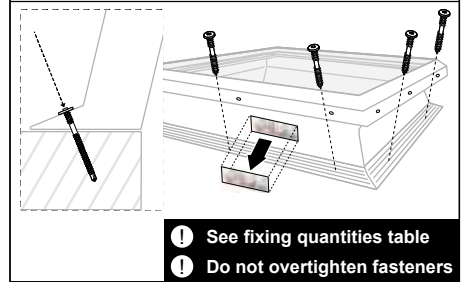
1 Mastic/Silicone around the edge of the roof opening



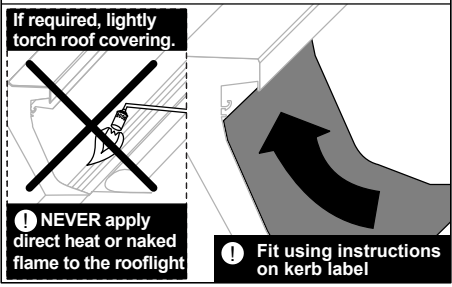
2 Facing hinges upslope, place kerb squarely over roof opening



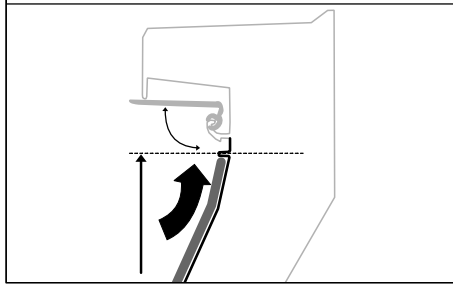
3 Fix kerb to roof using 55mm kerb fasteners **Remove and retain label**



4 Install roof covering according to manufacturer's installation recommendations



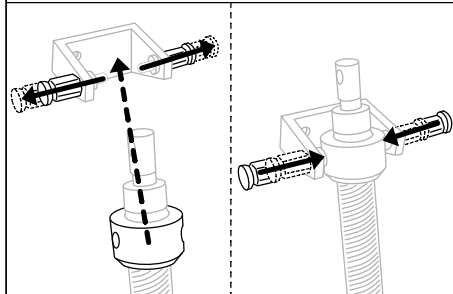
5 Terminate roof covering in accordance with instructions on retained kerb label



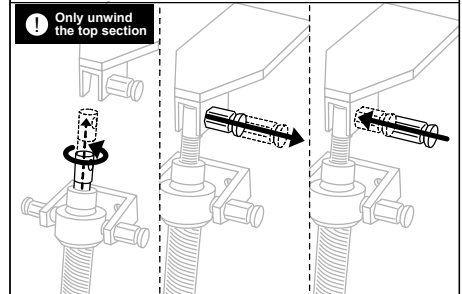
Product is supplied assembled and locked shut.

The following is for information only.

i Attach worm drive to lower bracket on kerb



i Attach worm drive to upper bracket



! **TECHNICAL SUPPORT:** For any technical information/queries please contact your supplier. The manufacturer operates a policy of continuous product improvement, and reserves the right to alter specifications at any time without notice. Every effort has been taken to ensure all details contained in this document are correct at the time of going to press but this document should be used only as a guide and does not in any way form part of a contract or warranty. It is the customer's responsibility to ensure that the product is suitable for the actual conditions of use, which are beyond the control of the manufacturer.

